



Saxonwell Group Parish News

April 25



50p where sold



saxonwellchurches

www.saxonwellchurches.org.uk

Service Rota for April 2025

Sunday 6th (Lent 5)

10am	Communion	Allington
10.30am	Communion	Claypole
10.30am	Morning Worship	Long Bennington

Sunday 13th (Palm Sunday)

9.30am	*Donkey Walk	Claypole Village Hall
10.30am	Communion	Long Bennington
6pm	Communion	Stubton

Monday 14th (Holy Monday)

8pm	Compline	Long Bennington
-----	----------	-----------------

Tuesday 15th (Holy Tuesday)

8pm	Compline	Fenton
-----	----------	--------

Wednesday 16th (Holy Wednesday)

8pm	Compline	Dry Doddington
-----	----------	----------------

Thursday 17th (Maundy Thursday)

7.30pm	Communion	Claypole
8.30pm	The Watch	Claypole

Friday 18th (Good Friday)

10am	*Walk with the Cross	Dry Doddington
11.30am	Passions reading	Foston

Saturday 19th (Holy Saturday)

2.30pm	Easter Fun	Long Bennington
8pm	*Vigil Confirmations	Cathedral

Sunday 20th (Easter)

10am	Communion	Allington
10.30am	Communion	Claypole
10.30am	Morning Worship	Long Bennington
10.30am	Lively Church	Sedgebrook
3pm	Communion	Foston

Sunday 27th (Easter 2)

10.30am	Communion	Long Bennington
---------	-----------	-----------------

*Donkey Walk

We will meet at Claypole Village Hall to walk through the village with the donkeys to celebrate Jesus's festive arrival in Jerusalem. The walk will end in the church, with crafts, games, cake and other refreshments.

*The Watch

A time of silent meditation and reflective readings directly after the communion celebration. You're welcome to join for as long as you would like. We will conclude at midnight.

*Walk with the Cross

The walk will start at Dry Doddington, carrying a cross to re-enact Jesus's final journey to his crucifixion. We will walk to Foston to emphasise the growing unity between our churches. If you would rather not walk, do join us in Foston churchyard.

*Vigil Confirmations

Members of our community are being confirmed at Lincoln Cathedral, alongside others from all over Lincolnshire. If you would like to cheer on our confirmation candidates with us, then please come along.

The Saxonwell Group Parish News (SGPN) magazine is distributed to every household in Allington (Red), Foston (Green), Long Bennington (Blue) and Sedgebrook (Yellow).

Join a Local Church Service on Zoom

Compline each Wednesday at 7.15pm.

Evening Prayer on the last Sunday of the month at 5pm

Log in using:- Meeting ID: 810 6571 1379 Passcode: 744328

[https://us02web.zoom.us/j/81065711379?](https://us02web.zoom.us/j/81065711379?pwd=djBjbHZuc2UwSjRmUEZEMEx1dlhQUT09)

[pwd=djBjbHZuc2UwSjRmUEZEMEx1dlhQUT09](https://us02web.zoom.us/j/81065711379?pwd=djBjbHZuc2UwSjRmUEZEMEx1dlhQUT09)

From the Vicarage

This Easter, our sermon series has centred on dramatic episodes from Jesus's life, like his transfiguration on the mountain and his temptation in the wilderness.



On the mountain, Jesus's face shone with a miraculous light. This echoes Moses's encounter with God on Mount Sinai thousands of years prior when his face also shone. When Moses descended the mountain, he brought the tablets of the law. When Jesus descended the mountain, he brought nothing but himself. Rather than a list of rules for us to do, Jesus offers us himself as the model for how we might be.

In the wilderness, Jesus faced temptation, much like the story of Adam in the Garden of Eden. Adam had all he could ever want but gave in to temptation almost immediately. Jesus, however, having spent 40 days without food or shelter in the opposite of a garden, resists temptation again and again. Jesus is often called the new Adam. The first Adam models a life of do anything. Jesus, as the new Adam, models how to be our best selves. Jesus blows apart ideas of religion as stuff we do— rituals to perform, rules to follow. The old WWJD (What Would Jesus Do?) bracelets encouraged this mindset. But a better question is: Who Would Jesus Be? His way isn't just about mere actions but about our best selves... our identity.

This Easter may you find time to ask yourself, "Who do I want to be?" Asking this question is what led me to Christ, as he shows again and again what it's like to be my best self: who my creator blessed me to be. Through all of life's ups and downs, my own failings included, I've never looked back. Have a happy Easter!

Rev'd Jon Speirs-Davies

Donations to Magazine

The magazine is produced mainly by volunteers and is paid for from adverts and donations.

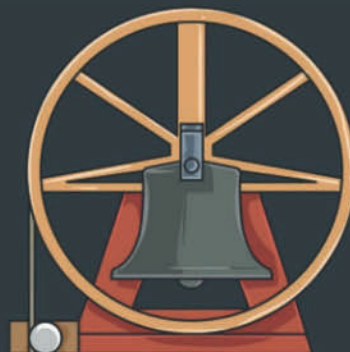
If you would like to donate, you can use any of the methods below:

Bank Transfer to SGPN, sort code 60-09-09 account 72118695

Cheque to SGPN posted to SGPN Treasurer, 36 The Pastures, Long Bennington, NG23 5EG

Hand to any church or PCC member

Ever thought about bellringing? Then let us **show you the ropes!**



join us every Thursday, 6 - 7:30pm

at St. Swithun's, Long Bennington

all are welcome to come along and join in one of the country's oldest hobbies.

Flawless Aesthetic Clinic



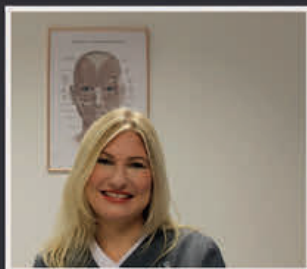
Long Bennington Business Park,
located just off the A1



10,000+
Treatments

High-quality treatments and expert advice for natural looking anti-ageing results.

- Registered Nurse & Medical Prescriber
- 18 Years Cosmetic Treatment Experience



- Confidential Appointments
- Full Facial & Skin Assessment
- Anti-Wrinkle Treatments
- Anti-ageing Treatments including Sculptra & Profhilo
- Restylane Dermal Fillers - Restylane

Get in touch or book a consultation at:
www.flawlessaestheticclinic.co.uk
07841389233

West Loveden

KIDS



UPCOMING
EVENTS



**MARCH
2ND**

LOTS OF FUN AND CHOCOLATE
PANCAKE HAD AT ST PETER'S
CLAYPOLE!

**MARCH
30TH**

MOTHERING SUNDAY EVENT
VILLAGE HALL, LONG BENNINGTON
9:30-11AM

**APRIL
13TH**

PALM SUNDAY
9:30 @ COULBY ROOM, CLAYPOLE VILLAGE
HALL TO WALK A DONKEY TO ST. PETERS
10:30 SHORT SERVICE AND CAKE

**APRIL
19TH**

EASTER FUN AND EGG HUNT
ST. SWITHUN'S LONG BENNINGTON
SATURDAY 2:30-4PM

SNACKS, CRAFTS, GAMES, SONGS AND STORY. ALL WELCOME.
CHILDREN PLEASE BRING YOUR SUPERVISING GROWN UP

ALLINGTON VILLAGE HALL REGULAR DATES FOR YOUR DIARY

Craft Afternoon: Monday 1.30-4.00pm. Includes quilting, model-making, cross-stitching, knitting, sewing, card making etc.

Pilates: Monday 7.00-8.00pm (Term time and requires pre-booking)

Tai Chi: Tuesday 10.00-11.00am. To reserve a place email: rebtpeacock@gmail.com

New Age Kurling: Tuesday 2.00-4.30pm

Viking Squares: Tuesday 7.00-10.00pm. Come and try Social Square Dancing – beginners welcome.

Zumba: Thursday 6.00-6.45pm

Allington Morris: Thursday 8.00-10.00pm (September – April)

Yoga: Friday 10.00-11.00am

Warm Hub: Friday 12.00-1.30pm. Free lunch of soup, bread and hot drinks.

Social Afternoon: Friday 2.00-4.30pm. Open to all for conversation and games.

Church Coffee & Cake: Monday 10.00am-12 noon (Monthly)

Allington WI: First Wednesday of the month – 7.30 for a 7.45pm start.

Visitors always welcome – £5.

Grantham Danserye: 3rd Saturday 2.00-5.00pm

Carpet Bowls: Alternate Sundays 2.00-5.00pm (September – April)

For further details on the above contact David Smedley on chair.allingtonvhmc@gmail.com.

For VikingSquares contact Judy Grummitt on 01400 281497.

APRIL

SPRING FAIR: Saturday 12th April, 2.00 - 4.00pm. Stalls selling a wide variety of goods including crafts, knitted goods, flowers and plants, gifts, bric-a-brac, cakes etc., plus a raffle and tombola, for which donations of prizes would be appreciated. There is also a seed swap stall for the gardeners.

Admission £1 (children free). Everyone invited to come along and browse the goods on offer, including the surrounding villages. Refreshments will be available.

FORTHCOMING EVENT MAY: By popular demand the Winter Singers will be entertaining us with another concert on the 9th May. Further information in the May magazine.

VIEW FROM THE PEW – HOLY TRINITY CHURCH ALLINGTON

Building works are now almost finished apart from one or two items to be completed. We will be returning to Church on Sunday 6th April for a communion service at 10.00am led by Rev. Jon



The left hand picture shows the new DDA compliant ramp and the right hand picture is the new entry to the organ loft with the new servery area underneath.



We are inviting the bishop to a service of reopening and rededication. As soon as we have a date when the bishop is available we will organise the service and invite our group churches to join us.

COFFEE AND CAKE

The next two Coffee and Cake mornings will be held on Monday 7th April and Monday 5th May from 10-12 in the village hall. We look forward to seeing you all there for coffee, cake and a chat.

We continue to thank all our loyal supporters who enjoy our coffee and cake mornings and always look forward to welcoming new visitors and friends. A warm welcome awaits you all.

CHURCH CLEAN UP – We are deep cleaning the Church on Wednesday 26th March at 10.30 – If you have any time to spare to give us a hand, we would be really pleased to see you. Tea/coffee/bics will be available. Just turn up on the morning with a brush and duster!

SERVICE PLANNING.

Sunday 6th April 10.00am Communion with the Rev Jon

Sunday 20th April 10.00am Easter Day Service – Rev Les Batty

We are hoping the service of reopening and rededication will take place during May if the bishop is available.

FUTURE EVENTS

EASTER MARKET – Saturday 12th April – we have a cake stall as usual. Marian is away so any donations of cake can either be brought to the hall from 12 noon on the day or delivered to Mary and Bob at 56 Park Road up until lunchtime on the 12th.

WINTER SINGERS – We are again joining with the Village Hall Committee to host a concert by the Winter Singers on Friday 9th May. Tickets £8 to include tea and biscuits. We to provide 3 raffle prizes. Marian will distribute tickets to PCC members to sell.

CREAM TEAS – as part of the village celebrations for both VE day and VJ day Chris Baron and Sally Dury have volunteered to hold cream tea events. These events will take place on Sat and Sun 10/11 May and Sat and Sun 16/17 August with special commemorative services on both Sundays. The teas will be at Chris and Sally's on the Saturdays and at the Church on the Sundays.
More info to follow soon.

CHRISTMAS TREE FESTIVAL – plans are moving forward. Dates have been fixed for the event to take place on 13/14 December with set up days 10/11 December. On event days tea/coffee/biscuits will be available from 10-4. There will be a prize for the best dressed tree judged by those visiting the event. The theme is 'What Christmas means to you'. Entries are invited both from individuals and organisations. Please contact Mary McKinlay if you would like to reserve a place in the Church bobmckinlay1@aol.com or 07968 819636.

ALLINGTON WI

In MARCH our ANNUAL MEETING was held and the evening started, as always, by singing 'Jerusalem'. The current President and Committee members were unanimously voted by members to serve for another year.



Following refreshments, there was a 'Guess the Baby' quiz. Members brought photos of themselves as a baby or up to 5 years' old and we had to guess who was who! It was a very funny and thought-provoking end to the evening.

Next Meeting: 2nd April 2025 – Dorothy Gaughan – Food Bank – How it works. 7.30 for a 7.45 pm start, at Allington Village Hall. Visitors are most welcome to attend, at a visitor's fee of £5.00.

STAMPS AND USED PRINTER CARTRIDGES

Used postage stamps are collected for the Royal National Institute for the Blind (RNIB).

Used printer cartridges, of all types, are recycled to raise money for the School in Sierra Leone, with the motto 'Education Changes Lives', which was founded over 15 years ago, to provide education for children where there was no school. For further information email allingtonwi@gmail.com

BEAT THE SCAMMERS

More and more of us are using a tablet/Ipad or our phones to manage our online activities. While these are generally less attractive to scammers than computers, they also have a real weakness. We all love and are being encouraged to download Apps on our devices. Some Apps may not be what they appear to be.

The advantage of our phone and table/Ipad is that they are mobile. This means we take them at different places. When away from home, in the UK or abroad, we connect to available WIFI networks to access to the internet. These WIFI networks are not secure and it is easy for scammers to connect to our phone or tablet/Ipad.

· **Tip 1:** When installing Apps, always use known App providers such as App Store or Google Play Store. Don't download Apps directly from links presented to us on webpages or pop-ups.

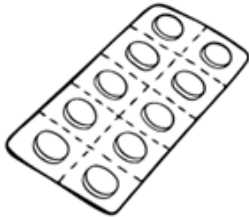
· **Tip 2:** It is generally okay to use unsecured WIFI networks for basic internet searches. It is however strongly recommended to NOT use them when sharing or accessing personal or financial data. Also try to log-off the WIFI network when we have finished using them. When in the UK most of us don't need to use the unsecured WIFI networks as we can use the internet on our own phones as normal.

**DO YOU HAVE EMPTY BLISTER PACKS
FROM MEDICATION?**

PLEASE RECYCLE THEM

Lots of us end up with lots of empty blister packs, and most end up in landfill. ALLINGTON WI ARE COLLECTING THEM TO RECYCLE AND HAVE PUT TWO BINS IN THE VILLAGE HALL – ONE OUTSIDE THE KITCHEN (SERVING AREA) AND ONE IN THE POST OFFICE.

If you visit Grantham, blister packs can be recycled in Superdrug in the Isaac Newton Centre.



CaSSOA
THE CARAVAN STORAGE
SITE OWNERS' ASSOCIATION



Est. 2000

GOLD AWARD

Three Shires Caravan Storage Ltd

Long Bennington NG23 5EX

Secure Site, Generous Opening Hours

Family run business

Valerie & Sally Richardson

01400 281549

Mobile: 07799 564992



DREW GROUNDWORKS AND PAVING CONTRACTOR

(Long Bennington)

**ALL ASPECTS OF GROUNDWORKS
UNDERTAKEN**

**INCLUDING
BLOCK PAVING AND SLABBING
DRIVEWAYS AND PATIOS
SHED BASES
FENCING AND LANDSCAPING**

All work undertaken to customer requirements

Telephone: 078100 16682 OR 01400 281409

FOSTON - DATES FOR YOUR DIARY

Foston Parish Council

Meet in the Village Hall on alternate months. A 15-minute period is set aside at the beginning of each meeting from 7.30 – 7.45pm, please note the meeting will commence at 7.30pm if no residents are present. Confirm with Christina Lees on 01400 281309.

Uniform Groups Meet at the Village Hall

1st Foston Brownies - Thursdays 6.30pm - term time only.

Register interest via www.girlguiding.org.uk

Rainbows -Thursday 5.00-6.00pm

Church Coffee Mornings - 10am-11.30am on the first Wednesday of the month

Foston Coffee Morning - 10am-12noon on the third Wednesday of the month

Foston Neighbours

Foston Neighbours are here to lend a hand – if you need any assistance with lifts to appointments, shopping or other domestic issues, we will do what we can to help, or signpost you to other services that may be right for you. It's easy to get in touch – just call or email, details above.

ST PETER'S FOSTON – NEWS FROM THE PEWS

What's happening in Foston ...

Services at St Peter's

Here are our Services over the next couple of months for your diary:

Easter Sunday: 20th April – 3pm, Holy Communion

18th May – 3pm, Holy Communion, APCM afterwards

We are moving our regular service to the third Sunday in the month. Holy Communion is also available at Long Bennington on the 2nd and 4th Sundays of the month, so we hope congregations will visit other churches. We are also exploring the option of having Evensong on the 1st Sunday of the month – look out for information about this.

The Church remains open to all, twice a week for private prayer on Wednesday (1-4 pm) and Sunday (9.30 am - 1pm). Please feel free to use the church for quiet contemplation and prayer.

Upcoming Events

Events for 2025 are currently under development but this is the general picture

- Easter Wreaths / Crafts in the Church – 11th April, 7pm: An evening in the Church for a fun event in conjunction with the WI. Look out for more details
- 18th May – Annual Meeting after the Church service at 4pm – all welcome
- June / July – Afternoon Tea in the Garden
- Early September – Heritage Open Days – once the dates and theme have been announced we can develop our offering, but we are likely to have a speaker on the heritage of the church, tower tours (weather permitting) and the Village Heritage Trail.
- 21st September – Harvest Service (3pm) followed by Harvest Supper on Monday 22nd September
- 9th November – Remembrance service (4pm)
- November – Wine Tasting
- December - Carol Service and possible advent festival – dates and themes tba.
- 24th December – Christingle Service (4pm)

Coffee Morning: Come and join us for chat and homemade cake on the first Wednesday of the month. So many have been attending recently so it is clearly the place to be! Just £2.50 for all this... At the Village Hall from 10-11.30am on the following dates: Next dates: 2nd April 7th May

Regular Giving

Money makes the world go round And it certainly helps to keep the Church well maintained. Only a small proportion of our finances go to the Diocese to cover the cost of our Parish Vicar. The remainder is used to keep the Church standing, safe and open for all. If you would like to support St Peter's Church, you can set up either regular giving or one-off donations through the following website:

www.parishgiving.org.uk and search for Foston St Peter.



Alternatively use this QR code:

Sadly, money is needed to keep the Church running – any help is greatly appreciated! For more details for anything listed here, please contact either Eileen Ross (tel 07710 534732) or Lucy Bliss (mobile 07740 980689, email lucyjanebliss@gmail.com).

FOSTON WI

As we approach our AGM, it is my pleasure, as President, to reflect on this year, which was another joyful, busy year for Foston WI.



We have 27 members and enjoyed Saturday coffee mornings visiting the Craft Market, Fulbeck, the Alpaca Farm, Syston Park Farm, the Bauble Hall at Doddington Hall, Margo & Plum's in Bottesford and in April, we are off to Farndon Cafe. All are welcome and this is a lovely opportunity to drink tea, eat cake, spend time with friends and share experiences - so important!



We made porcelain decorations at Thoresby Hall, saw a screened performance of Swan Lake and attended the National WI AGM online with a lovely lunch to which everybody had contributed. The speakers' subject matter was Preventing Domestic Violence. Our joint Afternoon Tea, with St Peter's Church, was wonderful as was the Opera Singer - what a privilege to hear her sing. We held the Annual White Ribbon Vigil on a rainy November night. The hot chocolate provided afterwards was a big pull! We held our annual wreath making event, members decorated the church for Advent and decorated a WI Christmas Tree with their own angels.

Another great programme is planned for this year.

Thank you to the amazing Committee members and I must thank our wonderful partners at this stage who are always available to help - moving tables, planting trees, providing and clearing greenery and generally supporting us in all that we do.

Carole Chandler-Barratt Foston WI – President

LONG BENNINGTON ART GROUP

This year will be our 3rd Art Exhibition and we hope to see you all there. Please come in and join us. Wander around our lovely exhibition and see the huge amount of painting talent within our village. There will be plenty of paintings that you will hopefully love and buy.

Any queries, please contact Margaret Butcher on 07484140914

**ART EXHIBITION & SALE OF PAINTINGS
TO BE HELD AT LONG BENNINGTON VILLAGE HALL
SATURDAY 17TH MAY 2025
10.30AM TO 3.30PM
REFRESHMENTS AVAILABLE. EVERYONE WELCOME**

LONG BENNINGTON GARDENING CLUB (VPA)

“Flowers are restful to look at. They have neither conflict or emotions.” Sigmund Freud. And more and more flowers are appearing now it is Spring. And to celebrate this our next meeting is on 22 April at the Village Hall at 7.30pm when we will be having Jonathan Sheppard lead a discussion on Hollyhocks and Cosmos. Everyone welcome.

Lots of other information about the Club is available on our website at longbenningtongardeningclub.com

Bev Gledhill – Secretary 01400 282239/07753 709513

LONG BENNINGTON MEDICAL CENTRE

· Easter opening hours – Reminder that the Medical Centre will be closed on Good Friday and Easter Monday. Please remember to order your prescription should you need your medication over this time.

· Following recent feedback, we have made some GP rota changes to accommodate resilience and efficiencies for 2025. Please see our website for the days our GP's work.

· Wellbeing walk – The next wellbeing walk will be on Wednesday 16th April 2025 at 10:45am from the Medical Centre. We have welcomed 157 walkers in the last 12 months. It's never too late to join in.



LONG BENNINGTON
Medical Centre



JONIC BUILDING SERVICES Ltd.

john@jonicbuildingservices.co.uk

Local family serving Long Bennington & surrounding area for over 90 Years

-Newbuilds -Extensions-Conversions-Renovations-

-Landscaping-Repairs-Maintenance-

References available on request

Ring John Dawson for a free quotation or advice

MOBILE: 07815 323708

36 Main Road Long Bennington NG23 5DJ

E Gill & Sons *Funeral Directors*

E Gill & Sons are proud to have provided care and advice to families in the Newark and District area for over 100 years

24 Hour Personal Care
Prepaid Funeral Plans Available

Newark and District

01636 677461



egillandsons.co.uk



Long Bennington – REGULAR DATES FOR YOUR DIARY

(Please also see Village Hall Schedule)

Long Bennington Village Hall Committee AGM

Wednesday 10th April 2024. 7.30 p.m. All welcome. Agenda will include annual reports from the Chair and Treasurer and election of key committee roles.

Mobile Library Service

Outside Long Bennington Village Hall Friday - 1330 - 1430.

Enquiries to Customer Service Centre on 01522 782010 or www.lincolnshire.gov.uk

Tea-n-Chat

Started by St Swithun's church to provide a place for people to meet in warm, friendly surroundings. It is held in Long Bennington Village Hall on the last Friday of every month from 2.15 - 3.30pm. (except holiday breaks in August and December). Everyone is welcome, and tea, coffee and cakes are provided. Please feel free to join us.

Long Bennington Coffee Morning

The Reindeer every Thursday at 10.30am. Coffee/tea and biscuits £3.00. All welcome.

Methodist Coffee Morning

Please join us every 3rd Saturday in the month, in the Methodist Chapel for coffee, cake and a chat.

The Chatty Café

Meeting every Thursday afternoon 2pm- 3pm in Baker's at Sixty-Two – Main Road, Long Bennington. The Scheme is a national initiative aiming to reduce loneliness by getting people chatting. The group is hosted by two Chatty Cafe Scheme volunteers each week. Contact Mary Barlow marybarlowhello@gmail.com or tel: 07885 639091

Long Bennington Afternoon House Group

All are welcome. We meet alternate Mondays at 2.30pm at 76 Main Road. For more details please contact Joy Jordan on 01400 281355.

Book and Card/Gift Stall

Second Sunday each month there will be a stall in St Swithun's church, selling books, cards and small gifts, run by Helen Baker from Claypole. Come and have a look for that special card or an uplifting spiritual book and have a chat and coffee/biscuits around 11.30am to 12 noon (following the 10.30 service).

Long Bennington Pre-School

A registered charity offering a safe, secure and warm environment to educate your child. Qualified, experienced staff will support your child to reach their full potential. Based in the small hall at Long Bennington Village Hall we are open Monday to Friday 9.00am - 3.15pm during term time. Funding is available for all 3- & 4-year-olds including the FREE 30 hours offered to those who are eligible. 15 hours funding also available for eligible 2-year-olds, alternatively it is £4.5 per hour for fee paying parents. For more information or to arrange a visit call Julie on 07816 537242 or email longbenningtonpreschool@googlemail.com

Steve Smith Window Cleaning

Window Cleaning
&
Gutter vac clearing

Mobile 07762815826

HS Homestead

Roofing & Home Designs Ltd

For all your roofing and building services.

Currently offering free surveys and quotations.

NEW & FLAT ROOFS - EDPM RUBBER ROOFING
- ROOFING REPAIRS - CHIMNEY REPAIRS -
LEADWORK - DRY VERGES - REPOINTING -
RE-FELTING - CONCRETE GUTTERS -
GROUNDWORKS

Have your gutter cleaned & repaired from £25
with a free roof inspection - get ready for
winter now!

Grantham: 01476 500 207 On call: 07471 171 850

www.homesteadroofingdesigns.co.uk

homesteadrutland@gmail.com

**MALCOLM FRYER
PLUMBING & HEATING**

- BATHROOMS / KITCHENS
- BOILER REPLACEMENTS
- CENTRAL HEATING
- ALL PLUMBING REPAIRS

CIPHE
REGISTERED PLUMBER



Tel: 07860 267178

3 Main Road, Long Bennington, NG23 5EH.

Long Bennington – Village Hall

When	Class/Meeting	Time	Hall	Contact
Mon weekly	Beginner to intermediate Pilates	11:45 – 12:45	Main	Linda Brady 07850 618516
Mon Weekly	Advanced Pilates	10.30-11.30	Main	Linda Brady 07850 618516
1 st Mon monthly	Parish Council	19:00 – 21:00	Small	Jane Evans 01400 282716
2 nd & 4 th Monday Monthly	Rotary Club	19:00 – 20:00	Bar	secretaryLBR@oulook.com
Tues weekly	Bennington Art Group	10:00 – 12:00	Foyer	Margaret Butcher 07484 140914 margaret23butcher@btinternet.com
1 st Tues monthly	WI	19:30 – 21:00	Main	Margaret Butcher 07484 140914 margaret23butcher@btinternet.com
4 th Tue monthly	Gardening Club	19:30 – 21:00	Main	Amy Hodson amyhodson4@gmail.com
Weds weekly	Post Office	09:00 – 12:00	Foyer	
Thurs weekly	Post Office	13:00 – 15:00	Foyer	
Thursday Weekly	Yoga and Relaxation	9.45-10.45	Main	namasteyoga.uk@gmail.com or message 07349 936695
Thurs weekly	Adult Pilates Suitable for all levels	17:15 – 18:15 & 18:30 – 19:30	Main	Amanda 07967387969 https://www.corestrengthpilatesuk.com
Fri weekly	Adult Pilates -all levels	09:30 - 10:30	Main	Amanda, As Above
1 st & 3 rd Fri monthly	WI craft group	1030 - 12:30	Bar	Sue Clarke 01400 282986
Last Fri monthly	Tea and Chat	14:00 – 16:00	Main	Hilda Owen 01400 282471 ejanecowley@aol.com
5 th April	80s 90s Disco	19.00-23.30	All	Village Event run by Rotary. Tickets from Sharricks or contact Rotary
9 th April	LBVH MC AGM	19.30 -20.00	All	AGM -All residents welcome to attend and find out the latest news and plans for the Village Hall
20 th April	Wine Club	19.00-21.30	Bar	Raj Solanki raj@libradrinks.co.uk
20 th April	Electric Jive	15.00-19.00	Main	theTramp@justabeginner.com

Help Needed

If you are a resident of Long Bennington and would like to ensure the future stability and indeed, the existence of the hall, you would be warmly welcomed to join us. Without more active volunteers, we will be severely limited in the number of events for the village and surrounding areas we can support.

We meet once per month for a couple of hours. Call us on 07816 267 927 or email us at bookings@longbenningtonvillagehall.org if you are interested.

For more information on the Hall visit our website:-
www.longbenningtonvillagehall.org and/or join our Facebook page:- Long Bennington Village Hall (aka St James Hall)
<https://www.facebook.com/groups/820082729967125>



ALL TYPES OF TREE WORK

**CROWN REDUCTIONS, THINNINGS
AND CROWN LIFTING**

FELLING

STUMP GRINDING

SITE CLEARANCE

NPTC & LANTRA QUALIFIED

7 YEARS' EXPERIENCE

FULLY INSURED

BBQ CHARCOAL FOR SALE

KILN DRIED FIREWOOD FOR SALE

For further details and quotes please contact

Richard Copley

Mob: 07917 390987

Email: manorfarmtreeservices@mail.com

www.manorfarmts.co.uk

Facebook: [f](#) @ManorFarmTrees

Instagram: [i](#) @manorfarmtr

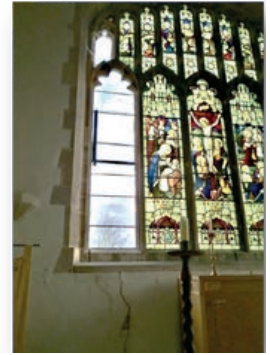
LONG BENNINGTON NEWS FROM THE PEWS

As many of you may know our Village Church, St Swithun's, has a history that goes back over 1,000 years! The first recorded mention of a church in the village is in the Domesday Book, 'The Great Survey', ordered by William the Conqueror in 1086. The current Church dates-back to around 1175; although it has been extensively modified over the years, most recently in 1902.



The Church is a Grade 1 Listed Building and is currently on Heritage England's 'At Risk' Register. During the first 20 years of the current century the North Aisle and East Chancel Walls suffered from significant movement, largely due to the breakdown of the drainage around these areas. This resulted in significant cracks in the wall and part of the main stained-glass window falling out.

Measures to cure the problem, were included in a 2019 Project which was funded by the Heritage Lottery Fund (HLF) and 6 other small grant providers plus significant money from our church funds, donations and fund raising. All these measures were successfully completed at that time.



Now, after a 5-year period of monitoring, we are at a point where the drainage works have been successful, and our structural engineer has confirmed that we can now go-ahead and repair the damaged areas of the North and East Wall. This work will include an element of wall-pinning, and the re-installation of a rebuilt stained-glass window panel in the East Chancel Wall.

Pictures of the damaged areas and the window panel are shown. However, nothing comes cheap these days, and the total cost of the required repair project is likely to be around £50,000.

We've already, again through your generous support over a number of years, raised £20,000 towards this work. However, we still have a large sum to find. The PCC has applied to 3 Grant Providers for help with funding, but all require applicants to meet part of the cost themselves.

If we 'do nothing' we could ultimately lose the use of our wonderful Village Church! So, we are now actively continuing fund raising and ask – Can you Help?

Donations can be made in a variety of ways:

By online bank transfer: Account Number: 50110357
Sort Code: 05-04-42



- Through our Give a Little page (see QR Code)
- By cheque addressed to: Long Bennington PCC
- Using our contactless card machine in church
- We also make use of the Parish Giving Scheme: <https://www.parishgiving.org.uk> where you can easily search for our church and choose either 'Regular Giving' or 'One off gift.'

World Day of Prayer

We learned a lot about life on The Cook islands and raised £160 for The World Day of Prayer organisation.



Applications for the Revised St Swithun's Electoral Roll

Every six years, the church has to completely renew the church electoral roll. 2025 is one of those years. Before 15th April you will be able to complete an application form if you wish to be included on the new electoral roll. If you are currently on the electoral roll, you will receive an application form by email or through your letterbox.

For anyone else wishing to apply, here is the link to the application form online [ELECTORALROLLAPP25.pdf](#) (You don't need to download Acrobat or sign up to access the file). Email it to: jill.froggatt40@btinternet.com

If you need a hardcopy, they are available in church, or by request if you would like to email me on the above address. Please return completed forms to one of the following by 15th April:

- My address: 36 The Pastures, Long Bennington
- Mailbox on the wall near stage door in Village Hall foyer
- Any member of the church PCC

MAN & WIFE WITH A VAN

HUSBAND & WIFE TEAM

- House Removals • Office Moves • Packing service
- House Clearance • Furniture Logistics
- Decluttering service • Storage solutions


We are a friendly, professional, reliable service. Local business. Handling single items right up to larger house moves with our Luton van.

Great rates & Fully Insured



Tel 07752 634141 or 01636 708757
manandwifewithavan.co.uk
office@manandwifewithavan.co.uk





PAUL BERRY

CHIMNEY SWEEP

N.A.C.S Registered

Wide area covered - Fully experienced in all types of solid fuel appliances.

Chimney pots and bird guards. A complete service from fireplace to chimney pot.

ASHBROOK - THE PADDOCKS
LONG BENNINGTON, NEWARK, NOTTS

Tel: 01400 282778

Events listed will be held in the Church, unless otherwise stated.

DATE	EVENT
Last Friday of each month	Tea-n-Chat, 2.15pm to 3.30pm Village Hall All Welcome
March 30th	Mothering Sunday Event, 9.30am to 11.00am Village Hall.
April 19th	West Loveden Kids Easter Fun, 2.30pm, (see poster in magazine).
April 27th	St Swithun's Annual Parish Church Meeting (APCM), 11.45am.
June 8th	West Loveden Kids Activity, 2.30pm
June 15th	Father's Day Event, 9.30am to 11.00am, Village Hall.
July 12th	Art/Crafts Weekend & Strawberry Tea. Details yet to be decided.
August 1st - 30th	Summer Holiday Children's Activities. Details yet to be published.
September 20th	Harvest Supper, 7.00pm Village Hall.
September 21st	Harvest Festival Service, 10.30am. West Loveden Kids Activity, 2.30pm
October 11th	Cranwell Military Wives Concert-'Last Night of the Proms', 7.30pm.
November 9th	Remembrance Service, 10.15am Methodist Chapel. Remembrance Ceremony, 10.50am Memorial Gardens. Remembrance Lunch, 1.00pm Whittakers Restaurant.
November 16th	West Loveden Kids Activity, 2.30pm
December 4th	Tea-n-Chat Christmas Lunch, 12.30pm Whittakers Restaurant.
December 13th or 20th	Choir Carol Concert. (TBC).
December 13th & 14th	Santa's Sleigh, 4.00pm to 8.00pm each day around Village.
December 21st	Carol Service, 10.30am.



ROTARY CLUB

Most of our members joined to help to make the world a better place. But we also meant to enjoy doing so and that is why we are a welcoming group who have made a difference in the villages in many ways.

We have picked litter, we have filled bags for flood defence, we have gardened in LB and plan to do the same in Foston. The Scouts, the Guides, the Football team, the Bowls Club, the WI, the Gardening Club – all have had help in various forms. You will find purple crocuses in many different places because we raised money to end Polio (down to the last two countries) by selling and planting corms – look out for the flowers in Allington, Foston, Claypole, Fernwood, Marston, and Coddington as well as outside the village hall and St Swithuns. We do our bit in the world – raising money for freshwater access in Uganda; sanitary protection in The Gambia, ShelterBoxes for disasters.



The village wouldn't be the same if our pal Santa didn't make us all happier at Christmas. And this doesn't even touch the entertainment sponsored by us – the discos, the bingo, the Parties in the Park and the Jubilee celebrations. We enjoy doing all these things alongside our everyday lives as fulltime workers, retired people, mothers, fathers, grandparents community workers, businesspersons - you name it. We are a small cog among over 1million Rotarians in the world, but heck we are big around here!



And you know what – YOU could be part of it too. If you have the willingness to give a little time - discover new outlets for your talents - join with like-minded folk – make friends - get inner satisfaction that comes from exercising your skills together with others. We are none of us Super Folk as individuals – but joined together what a force for good!!!



And we love it.

We meet for an hour on the 2nd and 4th Mondays of the month. 7pm at the Village Hall. Contact helo@lbrotaary.co.uk

LONG BENNINGTON BOWLS CLUB

OPEN DAY



Monday 5th May - 11am to 4pm

- Free tuition - all you need is flat shoes
- Full bar and refreshments

All are welcome to come and try their hand at bowls

www.longbenningtonbowlsclub.weebly.com

✉ longbenningtonbowlsclub@outlook.com
☎ 07736 311 854



SUMMER EVENT

St Swithun's Church, Long Bennington

SAVE THE DATES!
Saturday 12th & Sunday 13th July

Arts & Crafts Displays & Stalls
Music & Children's Activities
Refreshments Including Brunch Rolls
& Strawberry Teas
'Through The Window'
Art Competition & Family Quiz

Fund-raising for church wall & stained glass window repairs



The Rotary Club  of Long Bennington

Presents



**Fully
Licenced
bar**

80s 90s Disco

**Tickets a
bargain
at £7.50**

Saturday April 5th 7.30pm - Long Bennington Village Hall

Tickets from Sharricks or hello@lbrotary.co.uk

Put the freshness back into your home

**Cleaner, Brighter, Healthier
Carpets and Upholstery, Both
Domestic and Commercial**

I am totally dedicated to giving you the Best Ever carpet, curtain and upholstery cleaning and stain protection services, all at sensible prices and backed up with my 100% risk-free, money back guarantee on every job.

We clean

- Leather Suites
- Carpets
- Carpet Tiles
- Oriental Rugs
- Upholstery

We Apply

- Stain Protector
- Dust Mite Killer

We Remove

- Spots & Stains
- Odours
- Chewing Gum
- Dust Mites



**TRUST
MARK**
Government Endorsed Standard
www.trustmark.org.uk

NCCA
National Carpet Cleaning Association
Member 2488

Manor Carpets & Upholstery Cleaning

Contact Gordon Scott Tel: 01476 562702
Mobile: 07703651583
www.manorcarpetcleaning.co.uk



The Oriel Window Gift Shop

90a Main Road, Long Bennington NG23 5DL

*We offer a great selection of home décor, gifts
and cards for all occasions.*

Also

Garden tools, seasonal plants

Plus

*A variety of vintage/antique stoneware,
garden ornaments, birdbaths, planters etc.*



Opening Times
Wednesday - Saturday 09:30 - 4:00
Sunday 11:00 - 4:00



4th March 2025 Meeting

37 Members attended our Ordinary and Annual Meeting, where the minutes of the last meeting were read out and we heard the Secretary's report encompassing the last year's events, reminding us of all our wonderful speakers and the fun evenings we have enjoyed.

We also have a well-attended Craft group which meets in the Village Hall foyer on the first and third Friday of each month. This is for WI members only but is a wonderful way to spend a couple of hours catching up with friends whilst doing something constructive and teaching some of us new skills.

Jenny Flint and Pearl Scott are the Committee members who organise our theatre and cinema trips and book the speakers and entertainment for each meeting and are excellent at finding such interesting local productions and entertaining and informative speakers.

We are also entering the Lincolnshire Show competition this year, the theme being Jungle River Ride, so cakes were made and tasted and voted for to be entered with our exhibit. Anne Lockhart's tasty fruit flan was a clear winner.

We have two new Committee Members joining the team and Margaret Butcher kindly agreed to stay on as President.

Our evening ended with cheese and biscuits and refreshments, and we are looking forward to a packed calendar for the rest of the year.

LONG BENNINGTON WI meet at 7.30pm on the first Tuesday of the month at Long Bennington Village Hall

April is the start of our membership year and we have an interesting programme planned that will hopefully tempt you to join up and become a member. If you come along as a visitor, it will cost £5 however if you decide to join up after that visit the £5 will be taken off the membership fee of £51 - Bargain!

May 6 Sniffer Dog Demo Dawn- Marie Lesh will demonstrate her work as a Drugs Dog Handler accompanied with her Labrador and Springer.

June 3 Communicating Through Body Language. Nancy Appleyard will explain how we can tell what those around us might be thinking.

July 1 Flatlands – Songs and Stories from the Fens. Patty and Dave bring their personal aspects of living in this Lincolnshire landscape. With guitar, voices, narration, and slides

For more information please contact Margaret Butcher on 07484 140914 or margaret23butcher@btinternet.com

LONG BENNINGTON PARISH COUNCIL

The Parish Council had its last meeting on 3rd March at St James's Hall.

DRAINAGE IMPROVEMENTS: Phase two of the drainage improvements funded by Lincolnshire CC have now been completed. The Parish Council discussed how well the project was managed and agreed to commend the contractors.

PLANNING - S25/0237 Adams: Application for the demolition of existing dwelling and erection of 2 (No.) dwellings (resubmission following S23/2366) at 47 Church Street, Long Bennington. Councillors agreed that the previous issue of overcrowding has been dealt with by reducing the number of houses from three to two and the other main issue of drainage has also been dealt with in the application. It was resolved however to submit comments as follows:

One of the main concerns related to this application is drainage. A number of Long Bennington residents on Church Street have experienced flooding to their properties so drainage solutions should be robust, ensuring existing residents are not impacted by further development. The drainage report indicates that soakaways are not suitable and the developer has proposed a polystorm system as a solution. Long Bennington Parish Council would like to request that the planning authority has satisfactory confirmation from Anglian Water that they are completely satisfied with the drainage proposals. The confirmation should include comment that confirms the proposal will not exacerbate the reported flooding issue in the immediate area.

WITHAM MEADOW: We have now taken delivery of four bug hotels that are to be installed in the meadow, enhancing the space and promote biodiversity through providing species with habitats and overwintering sites. The project has been funded by the UK Shared Prosperity Fund via SKDC. Please visit this open space and take a look.

LONG BENNINGTON ANNUAL PARISH MEETING – MONDAY 12th MAY 2025

Please make a note in your diaries and come along to help shape the priorities for our village for the coming year. This can be relating to drainage, parking, speeding, local community facilities, our open spaces or anything you feel strongly about. The Parish Council invites you to submit any questions or raise any issues that can be covered at the meeting.

Following Parish Council meeting dates Monday 7th April and Monday 12th May 2025.

As always, if you have any issues or concerns you wish to raise with the Parish Council, please contact me on 01400 282716 or email parishclerk@longbenningtonparishcouncil.org

Jane Evans Parish Clerk

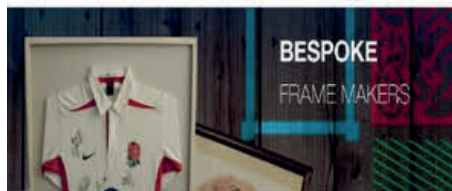


Guild Commended Framers
Member of the Fine Art Trade Guild
Members of the Professional Picture Framers Association

Churchill Room, Balderton Hall
Fernwood Village, Newark on Trent
Nottinghamshire, NG24 3JR



t: 01636 921461
e: info@framinell.co.uk
www.framinell.co.uk



ACTION FOR OUR VILLAGES

VOTE CONSERVATIVE
ON 1 MAY

Ben GREEN – A strong local choice for our villages

Our villages deserve a representative who listens, understands, and takes action. On 1 May, vote for someone who stands up for our communities and delivers results.

Five good reasons to vote for Ben GREEN

- 1. A LOCAL WHO CARES** Born in Grantham and raised nearby, I studied history before building a career in environmental conservation, helping councils plant hundreds of acres of woodland. When I'm not working, you'll find me enjoying real ale, coding, climbing Scottish mountains, or tending to my garden – especially my artichokes!
- 2. A TRACK RECORD OF ACTION** When an Independent-led, Labour-backed council removed swings from a local park, I took action. I launched a campaign, gathered signatures, and got them replaced. As a District Councillor, I also introduced kerbside battery collections to make recycling easier. Simply tie a clear bag of used batteries to any colour bin, and the council will collect them for you. Give it a try!
- 3. SAVING OUR COUNTRYSIDE** Labour's reckless overdevelopment threatens our countryside. I'll fight for smarter planning, ensuring that any growth comes with better roads, schools, and healthcare. Our rural character must be preserved, not bulldozed. I've already blocked a huge anaerobic digester proposed for my district ward.
- 4. LOW TAXES, BETTER ROADS** I'll fight to get our fair share from out-of-touch politicians in London – fixing our roads, making them safer, and cracking down on fly-tipping. Unlike Labour, which takes more and delivers less, Conservatives get results. The Conservative-run County Council has invested £15 million in local drainage improvements, protecting homes and businesses from flooding – a major issue in Long Bennington now resolved.
- 5. A STRONG VOICE, NOT A WASTED VOTE** Reform's frustrations are understandable, but they have no plan, no experience, and no team ready to govern. A split vote hands Labour control. If you want real results, the only choice is Conservative.

Let's build a better future together

EMAIL: ben@actionforourvillages.co.uk

CALL: 07471 838698

VISIT: actionforourvillages.co.uk

FOLLOW: [fb.com/councillorben](https://www.facebook.com/councillorben)

Ben GREEN



BENNINGTON ROOFING & PROPERTY MAINTENANCE

Please call or message with your requirements as we do most jobs around your home. I offer good guarantees and good after service.

Roofing ● Moss removal ● Flat roof ● Pointing ● Paths
UPVC Installation ● Gutter clearing ● Guttering
Jet washing ● Chimneys/Lead work ● Fencing/Decking
Gates made to measure ● Turfing ● Pergolas ● Block paving
Patio ● Driveways ● Exterior painting ● General repairs



*FAMILY FIRM
SINCE 1996*

01400 281654

For immediate attention please call:

07496 614050

Based in Long Bennington NG23 5DS

WHAT'S HAPPENING AT THE METHODIST CHAPEL?

Sunday Services

All services can be viewed on the notice board outside the Chapel.

All our services start at 10.30am unless otherwise notified. Everyone is welcome.

Easter

Good Friday - This service will be on Friday 18th April starting at 6:00pm

Easter Sunday – 20th April starting at 10.:30 as normal

Knitting / Craft Group

Anyone interested in knitting, sewing, embroidery etc. would be very welcome to come along on a Monday morning from 10.30am to mid-day. There is a nominal entry fee of £2.50 to cover the heating costs and refreshments.

Games Afternoon

Are you looking for a little fun, come and join us on the 2nd and 4th Wednesday of each month when we get together to play board games and have tea (or coffee) and chat? We are always looking to welcome new participants so if you have a competitive streak, we look forward to seeing you. There is a nominal entry fee of £2.50 to cover the heating costs and refreshments. Activities start at 2.00pm

Coffee Mornings

Our next Coffee Morning will be held one week earlier than usual on Saturday 12th April, starting at 10am so come along and join us when there will be homemade cakes for sale and a raffle Entry costs £2.50 for bottomless tea or coffee and plenty of biscuits.



CLIFFORD
Heating Limited

Your Home Heating Specialist



- AGA & RAYBURN Range Cooker Specialist.
- Oil, Gas and Solid Fuel heating engineers.
- Fully fitted central heating systems.
- Boiler breakdown experts.
- Reconditioned AGA's inc. 13 amp electric.
- Monthly service plans from as little as £12 per month

T. 01777 872391
Online at www.cliffordheating.co.uk

AGA    RAYBURN

COVID SECURE



EXCELLENCE IN
KITCHENS AND BATHROOMS

CHEFS DELIGHT KITCHEN
BATHING BEAUTY BATHROOM

If you are looking for a beautiful bathroom or kitchen then look no further, I am the man to give you the "WOW" factor that you desire. With an excellent eye for detail, I offer the complete design and fitting service including, plumbing, tiling and decor to give you that dream look, exceeding your expectations.

TRUSTED AND EXPERIENCED
WITH YEARS OF SATISFIED
CUSTOMERS.
REFERENCES AVAILABLE

FULLY INSURED AND AT YOUR SERVICE!

Phone/Text Stuart on 07444 896 982 or
Louise on 07387 280 377
Email kit.bath.fitter@gmail.com
www.excellenceinkitchensandbathrooms.co.uk

01400 283 236

07957 347 777

cmurphyelectrics@outlook.com

MURPHY ELECTRICS

Local electrician based in Long Bennington.

- installation and re-wires
- maintenance and fault finding
- inspection and testing

Free estimates and all work certified to current IEE regulations.

Part-P registered.



Local Locksmiths

**No call out fee, DBS checked, 5* Reviews
24/7 Emergency Locksmiths**

**lockshaw7@hotmail.com
www.lockshaw.co.uk**

Local reliable Locksmiths



Littlegates for Littlepeople
Children's Nursery and Kids Club

Purpose built nursery in a rural location
Offering quality care for children aged
3 months to 11 years.

Fully qualified staff.
Open Monday to Friday 8am-6pm
Before and after school club

School holidays and non-contact days
also catered for. Open for 51 weeks of
the year
15/30 Hours funding available for
2,3&4 year olds

01636 626067

littlegatesforlittlepeople@googlemail.com

Dear Friends,

I lived for seven years in a town where, on Good Friday each year, the churches met together to re-enact in full costume, the events of Good Friday as we know it. The arrest and trials of Jesus; his ill-treatment at the hands of occupying soldiers; and his walk to the execution ground of Golgotha – the Place of the Skull; then his nailing to the cross, and the conversations and declarations that followed in the successive hours until Jesus committed his soul to God and breathed his last. It was an event that moved people to tears of sorrow and of gratitude. And all this happened in the full knowledge that this was not the end, but the beginning.



Imagine what it must have been like to be living the story forward – with no knowledge of how it would end. The accounts in the New Testament are full of strong emotions – love, anger, fear, bravado, betrayal, sorrow, bewilderment and despair - that all meet in this story: all our human reactions cascading through the lives of Jesus, his friends and his enemies, until that moment when Jesus exhales his last breath and the conflict is over.

As April begins, this year we reach the point in the story of Jesus where he decides to go to Jerusalem. It is not an easy decision – it could even have been as much a temptation to stay away as the temptations in the desert were real possibilities for him to follow a way other than his heavenly Father's. But he summons up all his determination, setting his face in the direction of the capital city, where he will make his public claim to be God's servant and face the consequences of acceptance or rejection – while being fully aware that the rejection was a high probability.

When Jesus invites us to follow him, he asks us in effect to nail his colours to our mast and live with the consequences also. None of us knows the future. We cannot guarantee that people will be open to the direction we feel our lives should take. We may be misunderstood, opposed and misrepresented, as Jesus was. We may find ourselves walking a lonely path of sacrifice at times and wonder whether things have to be this way.

It seems that they often have to if we are to make a lasting difference in the world and live lives of integrity and truth. Jesus shows us that beyond the struggle there is resurrection; beyond death there is life; and beyond grief there is hope. As Lent comes to an End in the passion, so may Easter Life break out in our hearts and lives, inspiring hope and vision for a better future and a better world than the one we so often experience. Blessed Easter!

Grace and peace,
Dave Bonny

David H. Bonny

Waymark Genealogy

Family History Research Services

www.waymarkgenealogy.co.uk

A full range of genealogy services

- Family trees & histories researched
- Archive, library & cemetery research visits
- Genealogical problem solving & fact checking
- Genealogical analysis of DNA results
- First World War and 19th Century military research
- Photographic scanning

Based in Long Bennington

Lorraine Johnson

07554 167 494

lajohnson@waymarkgenealogy.co.uk



SEDGEBROOK SOCIAL CLUB REGULAR DATES FOR YOUR DIARY

Rainbows/ Brownies Mondays 5.00pm/6.30pm
Grantham Canine Assoc Mondays 8.00pm-9.00pm
Knit and Natter Tuesdays 2.00pm-4.00pm
Ruff Diamonds Dog Training Tuesdays 6.00pm
Ruff Diamonds Dog Training Wednesdays 6.00pm
Pilates with Alice Thursdays 7.30pm-8.30pm
Club Bar Open to members Fridays 6.00pm-11.00pm
Ruff Diamonds Dog Training Saturdays 10.00am onwards
Club Bar Open to members Sundays 1.00pm-4.00pm
Heritage Group Meeting Sunday 23rd March in Church 3.00pm

Membership fee for 2025 is £15 per person (under 18s free)
We are always looking for new committee members, if you are able to help, please get in touch.

The club and bar are available for hire for private parties, social gatherings and regular events.

Please contact Amanda Longdon on 07849193159 or email [sedgebrook social club@hotmail.co.uk](mailto:sedgebrook-social-club@hotmail.co.uk).

ST LAWRENCE SEDGEBROOK – NEWS FROM THE PEWS

Church and Museum open daily 10am-4pm
Free Church Guide

Heritage Group meets bi-monthly 4th Sunday in the Social Club 3pm
Community Library and Jigsaws, Recycling for aluminium cans and ink cartridges
Grantham Food Bank collecting point

Teddy Bear's Picnic Children's Book set in St Lawrence Church available for £5 per copy



The church is open every day to give the community the opportunity to enjoy the museum, children's corner, books and jigsaws, the recycling, the food bank collecting point, and the opportunity for a peaceful space and private prayer.

HOLY WEEK

During Holy Week there will be there will be a sensory meditative pathway in the church for reflection during Holy Week. This will feature a creative prayer table and items that tell the unfolding story of Holy Week. There will also be crafts and mindfulness sheets.

EASTER DAY

Sunday 20th April 10.30am – Family Service for Easter Day. Wear your Easter Bonnets! Traditional Easter Egg Hunt and refreshments inside the church after the service. Hear the wonderful Bryceson organ ring out.



Services in April

Sunday 20th April 10.30am –
Easter Sunday Family Service with
Easter Egg Hunt and refreshments

Here is the QR code for the Parish Giving Scheme. It can be used for one off payments or setting up regular donations. Once scanned it will take you through the 3 steps to enable a donation to be made.



Out & About
— CARE —

monika@outandaboutcare.co.uk

Private carer fully insured with DBS check, experienced and qualified to level 3 in Health and Social Care is looking for new clients.

If you require any support to live in the community, don't hesitate to contact me. Including, but not exclusive to helping you socialise, find new friends in the community, drive you to hospitals/doctors appointments, sit with you and talk if you need some company.

Please call me on 07403 441 826

- Doctor appointments
- Medication prompting
- Socialising
- Domestic Skills
- Companion service
- Shopping together
- Making friends in the community
- Engaging in hobbies & interests

Assisting those that require support to live in the community

KEITH SELL

Plumbing & Heating Engineers Ltd

www.keithsell.co.uk - keithsellplumb@yahoo.co.uk

A Professional Service For All Your Requirements
Gas & Oil Installation & Servicing
Underfloor Heating
Pressurised Unvented Hot Water Systems
Energy Efficient Installation
Bathroom Design & Installation



Tel/Fax: 01636 706607 Mobile: 07976 429654
Grange Lane, Cotham NG23 5JZ

Contacts for the Magazine

Advertising , Counting and Distribution Manager Joy Jordan-
joy.g.jordan@icloud.com / 01400 281355
Treasurer - Jill Froggatt jill.froggatt40@btinternet.com /
01400 281204

EMAIL ADDRESS FOR ARTICLES:

Sgpnmag23@gmail.com

Copy Deadline for the May '25 issue is 12 April 2025 at 5pm

ADVERTISING - IN THE PARISH MAG

Full page colour £50

Full page b/w £40

Half page colour £33

Half page b/w £25

Quarter page colour £19

Quarter page b/w £15

Eighth page colour £13

THE SAXONWELL GROUP MINISTRY TEAM

West Loveden Minister Rev Jon Speirs-Davies Jon.sd@lincoln.anglican.org

Tel: 07766 486452

Lay Reader Jenny Stuart jenny.stuart@outlook.com 01949 842231

Retired Priest Rev. Stella Langdon-Davies

Authorised Lay Ministers Sylvia Andrews, Joy Jordan and Colin Sedgewick

Administrator Davina Tyler lovedenwest@gmail.com

CHURCH CONTACTS

St Swithun's, Long Bennington

Church Warden Bridget Rosewell 07836 215181

Treasurer Jane Cowley 01400 282691

Church Flowers Beryl Holmes 01400 281437

Safeguarding Officer Eileen Ross 01400 281932

St Peter's Foston

Church Warden/Treasurer Andrew Blanchard 01476 978664/ 07590652657

Safeguarding Officer Eileen Ross 01400 281932

Holy Trinity Allington

Church Warden Chris Dicken 01400 281524

Treasurer Bob McKinlay 01400 281671

Safeguarding Officer Marian Hubbard 01400 281496

Flowers Jill Storer/Linda Rycroft 283542/281516

St Lawrence Sedgebrook

Church Warden Alan Cook 07963553835

Safeguarding Officer Wendy Fowler wendyfowler@btinternet.com

mob. 07747022272.

Treasurer Ian McKay 01949 843691

Flowers Geraldine Statham glendogs@aol.com

Long Bennington Methodist Chapel

Steward Eileen Eggleston 07531 160197

Treasurer Kathryn Wood 01400 281489

COMMUNITY CONTACTS

Parish Council Clerks

Jane Evans (Long Bennington) parishclerk@longbenningtonparishcouncil.org

Mon 10:30-12:30 at Village Hall Tel:01400 282716

James Stanley (Foston) clerk@fostonpc-lincs.org 01522 889737

Jane Morton (Allington) parish.clerk@allingtonpc.org.uk

Jane Bratton (Sedgebrook) clerksedgebrook@gmail.com 01476 577175

Ted Bates (Chair) Long Bennington Charities 01400 281853

Village Halls: Booking Secretaries

Allington— Heather Nuthall Secretary - secretary.allingtonvillagehall@gmail.com

Bookings - bookings.allingtonvillagehall@gmail.com

Foston— Pam Fellows -07740 894605 email fostonvillagehall2023@gmail.com

or Richard Wynn 07579 779087 email fostonvillagehall2023@gmail.com

Long Bennington—Longbenningtonvillagehall.org.uk—07816 267927

Sedgebrook—Alan Cook— 07963553835

Other Useful Contacts

Long Bennington Medical Centre- 01400 281220

Foston book group Lucy Bliss - lucy.painter@opalhr.co.uk—01400 282661

Long Bennington book group—Moire Barnabas - 01400 283313

Long Bennington & Local Villages Rotary Group Secretary LBR@outlook.com

Long Bennington Girl Guides—Mon 7pm-8.30pm—www.girlguiding.org.uk

1st Foston Brownies Thursdays - 6.30pm - 1stfostonbrownies20@gmail.com

Village Hall

Rainbows Thursdays - 5-6pm 1stfostonrainbows20@gmail.com—Village Hall

Scout Group Gorrie Hall, Chapel Lane, Foston

Beaver Scouts Mondays- 6:30-7:30pm Adam Lashbrook

foston.beavers@gmail.com

Club Scouts Wednesdays—6:30-8pm—Claire Collier 01636 626097

Scouts Thursdays—7-9pm—Les Romans 01400 281217

Explorer Scouts -Mondays—7:45-9:30pm—Jenny Wyn 01400 282301

Women's Institute: (each meet monthly in their local village hall)

Allington—1st Wed 7:45pm—Margaret Dicken— 01400 281524

Foston—2nd Tuesday 7:30pm—Carole Chandler-Barratt- 07767 657745 Long

Bennington—1st Tuesday 7:30pm—Margaret Butcher - 07484140914 Email:

margaret23butcher@btinternet.com

LB Playing Fields: Booking Manager—Gemma Walker—07946 176034

Management Committee—Mike Manley—01400 282731

Long Bennington Toddler Group—Becca Thirtle—07545 491267

Long Bennington Pre-School—longbenningtonpreschool@googlemail.com 07816

537242

Bowls Club—Peter Fordham—07701059943 email nettyfordham@gmail.com

Friendship Group—Nicola Thorpe—07904 182752

Tea n Chat -Jane Taylor - 01400 282480

Junior Football Club—Steve Rowley—07909 857441

Twinning Association—Margaret Butcher – 07484140914

Village Produce Association—Bev Gledhill— 07753 709513

Writing Group—Shirley Lynn—07726 334280

LB Rotary Club- hello@lbrotary.co.uk

Foston Neighbours - 07422 881448 fostonneighbours@gmail.com

NHS



2,000 Weekly appointments
available now.

BOOK YOUR APPOINTMENT NOW
NHS Website/NHS App/Ring 119

WHISTLERS PHARMACY

YOUR LOCAL INDEPENDENT COMMUNITY PHARMACY



YOUR LOCAL NHS VACCINATION CENTRE

**NHS COVID BOOSTERS AND NHS & PRIVATE FLU
JABS NOW AVAILABLE**

**MONDAY TO SATURDAY
8AM TO 6PM
SUNDAY
10AM TO 4PM**

Tel: 01636 703756

WHISTLERS PHARMACY
Beaumont Chambers
1 London Road, Newark
NG24 1 TN

Your Local Pet Food Supplier



Gablestock is a family owned feedmill and farm. We produce feeds for livestock, horses and even the family pet. 75% of what Gablestock sell is manufactured on site using our own farm to provide home grown cereals and pulses.

We have been UFAS and FABBL registered for the past 10 years, with all other ingredients coming from approved sources, which are fully traceable. We pride ourselves in using good wholesome raw materials – producing high quality feeds. We



are open to the public and trade so why not call in and see our great range of animal feed all at great prices.

- Wild bird seed specialists
- Ideal for small holders, market traders and hobby farmers

Open
Monday to Friday 7-5pm
Saturday 8-4.30pm
Large Car Park



Gablestock

ANIMAL FEEDS



Gablestock Ltd, Witham Mill, Valley Lane, Long Bennington, Newark Notts NG23 5EE

Tel: 01400 281421 Fax: 01400 281851

www.gablestock.co.uk



B Benningtons

Serving home movers in
the local area from our base
in Long Bennington

**ZERO
VAT ON
FEES**



**ALL
SOLD
STC**

CONTACT US

01400 221100 07809 465944
stuart@benningtons.co.uk
www.benningtons.co.uk

